

054371

RECEIVED
LARAMIE COUNTY
CHEYENNE, WY.

CERTIFIED LAND CORNER RECORDATION

'89 FEB 21 PM 1 09

DESCRIPTION OF CORNER EVIDENCE FOUND, AND ORIGINAL RECORD (if known)

S.10 S.11
S.15 S.14
T.17N., R.61W.
6th P.M.

Found 50d spike and replaced with monument.

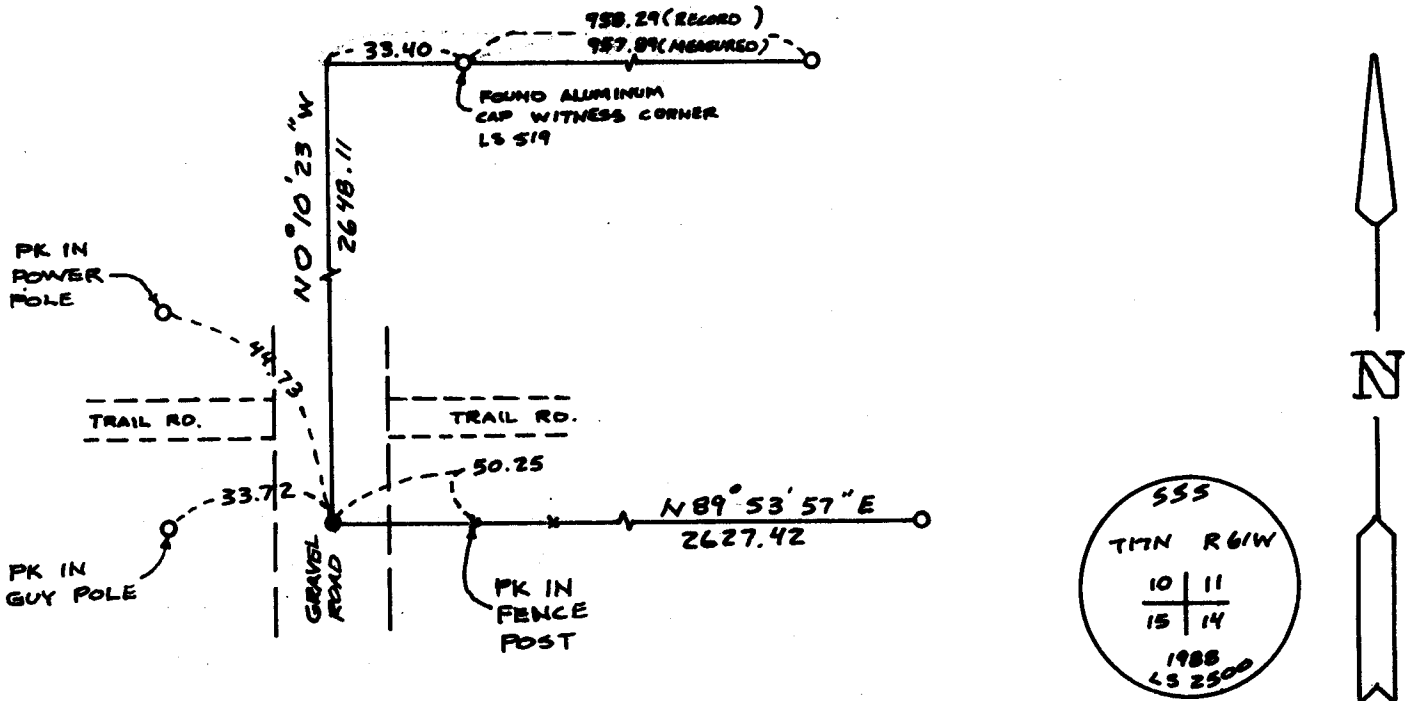
G.L.O. Record: Limestone 16"x16"x3" set 10" deep marked with 4 notches on South side and 2 notches on East side. Set by Charles A. Caton, August 4, 1873.

DESCRIPTION OF MONUMENT AND ACCESSORIES ESTABLISHED TO PERPETUATE THE ORIGINAL LOCATION OF THIS CORNER:

At the corner: Replaced found 50d spike with 5/8"x18" long rebar with 2" Aluminum Cap stamped as shown below.

Accessories : See ties below.

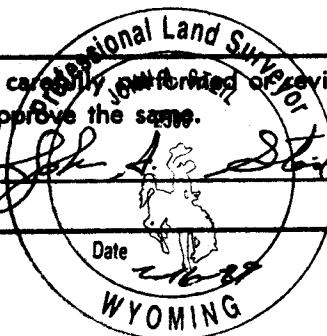
SKETCH, WITH COURSE AND DISTANCE TO ADJACENT CORNER IF DETERMINED IN THIS SURVEY. (May Sketch or Paste Reproduction on Reverse Side.)



I, John A. Steil certify that I have carefully examined or reviewed the work done on the diagrammed corner as reported on this recordation form and approve the same.

Signature of Surveyor

L.S. 2500
Registration No.



STATE OF WYOMING,
Office of Clerk and Recorder,
County of _____

This "corner record" was filed for record on the _____ day of _____, 19____, was noted on the cross-index plat and is assigned page No. _____, in book No. _____.

Janet C. Whitehead
County Official

Cross Index No.	J-17	T. 17N	R. 61W	Mar. 6th
				Mer.
				Mer.
				Mer.
				Mer.
				Mer.
				Mer.